



India Meteorological Department
(Ministry of Earth Sciences)

NATIONAL BULLETIN NO. 14

TIME OF ISSUE:0135 HOURS IST

DATED: 02.02.2023

FROM: INDIA METEOROLOGICAL DEPARTMENT (FAX NO. 24643965/24699216/24623220)

TO: CONTROL ROOM, NDM, MINISTRY OF HOME AFFAIRS (FAX.NO. 23093750)

CONTROL ROOM NDMA (FAX.NO. 26701729)

CABINET SECRETARIAT (FAX.NO.23012284, 23018638)

PS TO HON'BLE MINISTER FOR S & T AND EARTH SCIENCES (FAX NO.23316745)

SECRETARY, MOES (FAX NO. 24629777)

H.Q. (INTEGRATED DEFENCE STAFF AND CDS) (FAX NO. 23005137/23005147)

DIRECTOR GENERAL, DOORDARSHAN (23385843)

DIRECTOR GENERAL, AIR (23421105, 23421219)

PIB MOES (FAX NO. 23389042)

UNI (FAX NO. 23355841)

D.G. NATIONAL DISASTER RESPONSE FORCE (NDRF) (FAX NO. 26105912, 2436 3260)

DIRECTOR, PUNCTUALITY, INDIAN RAILWAYS (FAX NO. 23388503)

CHIEF SECRETARY, ANDAMAN & NICOBAR ISLANDS (FAX NO. 03192- 232656)

CHIEF SECRETARY, GOVT. OF TAMIL NADU (FAX NO. 044-25672304)

CHIEF SECRETARY, GOVT. OF PUDUCHERRY (FAX NO. 0413-2337575, 2334145)

CHIEF SECRETARY, GOVT. OF KERALA (FAX NO. 0471-232716)

Sub: Depression over Southwest Bay of Bengal off Sri Lanka coast

The Depression over Southwest Bay of Bengal moved slowly west-southwestwards with a speed of 4 kmph during past 6 hours and lay centered at 2330 hours IST 1st February, 2023 over Southwest Bay of Bengal off Sri Lanka coast near latitude 8.1°N and longitude 82.1°E, about 60 km northeast of Batticaloa (Sri Lanka), 115 km east-southeast of Trincomalee (Sri Lanka) and 400 km southeast of Karaikal (India).

It is very likely to move nearly west-southwest wards and cross Sri Lanka coast between Batticaloa and Trincomalee around early morning of today, the 02nd February 2023.

Forecast track and intensity are given below:

Date/Time(IST)	Position (Lat. °N/ long. °E)	Maximum sustained surface wind speed (Kmph)	Category of cyclonic disturbance
01.02.23/2330	8.1/82.1	45-55 gusting to 65	Depression
02.02.23/1130	7.8/81.1	45-55 gusting to 65	Depression
02.02.23/2330	7.4/80.3	35-45 gusting to 55	Depression
03.02.23/1130	7.0/79.5	35-45 gusting to 55	Depression

Warnings:

(i) Rainfall (warning graphics enclosed)

- ❖ Light/moderate rainfall is very likely at many places over coastal Tamil Nadu & Puducherry on 2nd February. Isolated **heavy rainfall** is very likely over south Tamil Nadu on 2nd February.

(ii) Wind warning:

❖ **Southwest Bay of Bengal:**

- Squally wind with speed reaching 45-55 kmph gusting to 65 kmph on 2nd February.

❖ **Along & off Sri Lanka coast:**

- Squally wind with speed reaching 45-55 kmph gusting to 65 kmph on 2nd February.

❖ **Gulf of Mannar and Comorin area and along & off south Tamil Nadu & Karaikal coasts:**

- Squally wind speed reaching 40-50 kmph gusting to 60 kmph on 2nd February.

❖ **Along & off north Tamil Nadu & Puducherry coasts:**

- Strong wind speed reaching 30-40 kmph gusting to 50 kmph on 2nd February.

(iii) Sea condition

❖ **Sea condition is likely to be rough to very rough**

- Southwest Bay of Bengal and along & off Sri Lanka coast on 2nd February.
- Gulf of Mannar and adjoining Comorin area and along & off south Tamil Nadu coast on 2nd February

❖ **Sea condition is likely to be moderate to rough**

- Along and off north Tamil Nadu & Puducherry coasts on 2nd February.

(iv) Fishermen Warning (warning graphics enclosed)

Fishermen are advised not to venture into:

- ❖ Southwest Bay of Bengal, Gulf of Mannar, Comorin Area and along & off Sri Lanka and south Tamil Nadu & Karaikal coasts on 2nd February.

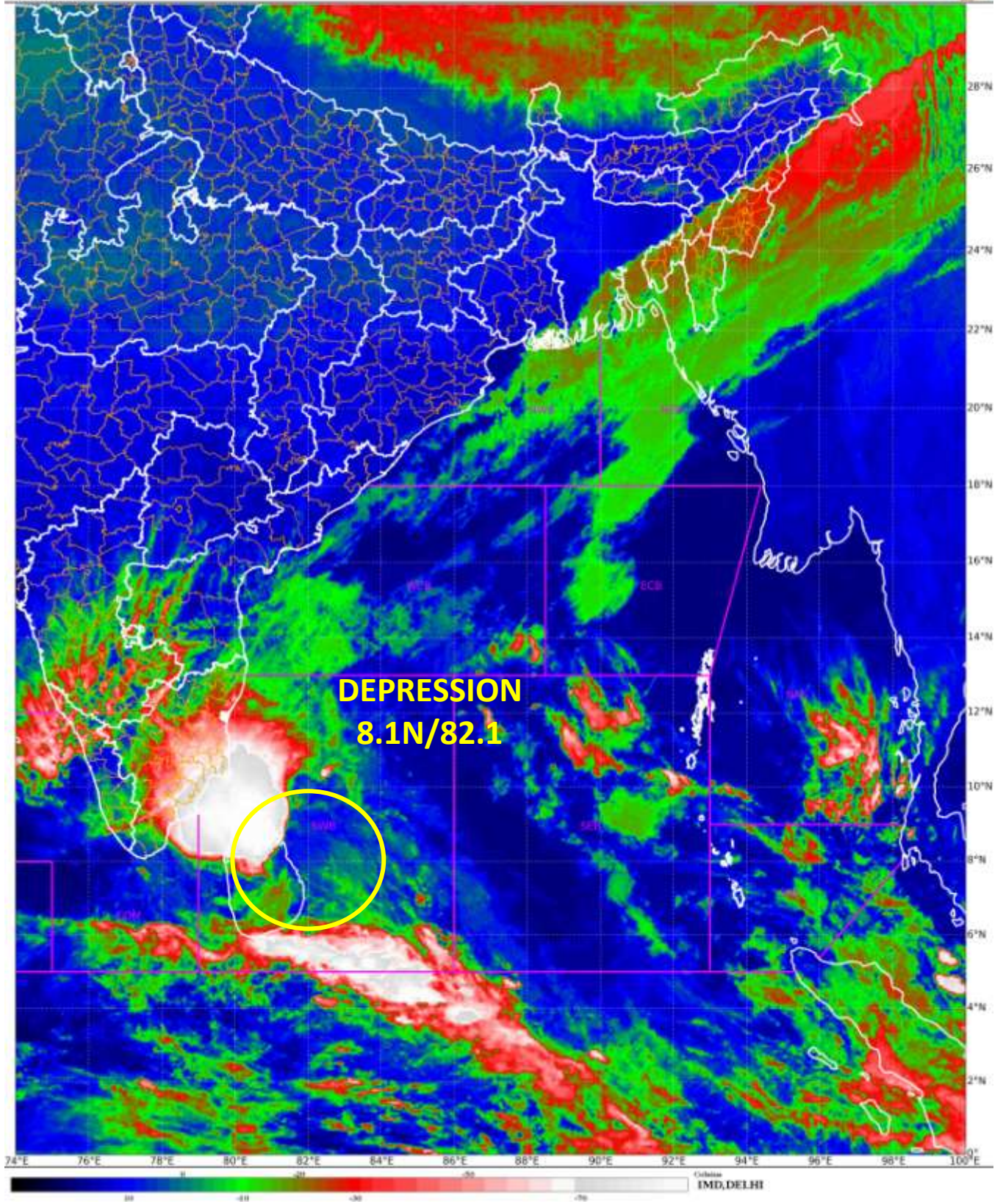
The system is under continuous surveillance and the next message will be issued at 0830 hours IST of today, the 2nd February, 2023.

(Shashi Kant)

Scientist C, Cyclone Warning Division, New Delhi

Copy to: ACWC Kolkata/ ACWC Chennai/ CWC Bhubaneswar/CWC Visakhapatnam/MO Port Blair

LEGEND: Heavy Rainfall: 64.5 to 115.5mm, **Very Heavy Rainfall:** 115.6 to 204.4mm **Most Places:** more than 76% of total stations, **Isolated Places:** Less than 25% of total











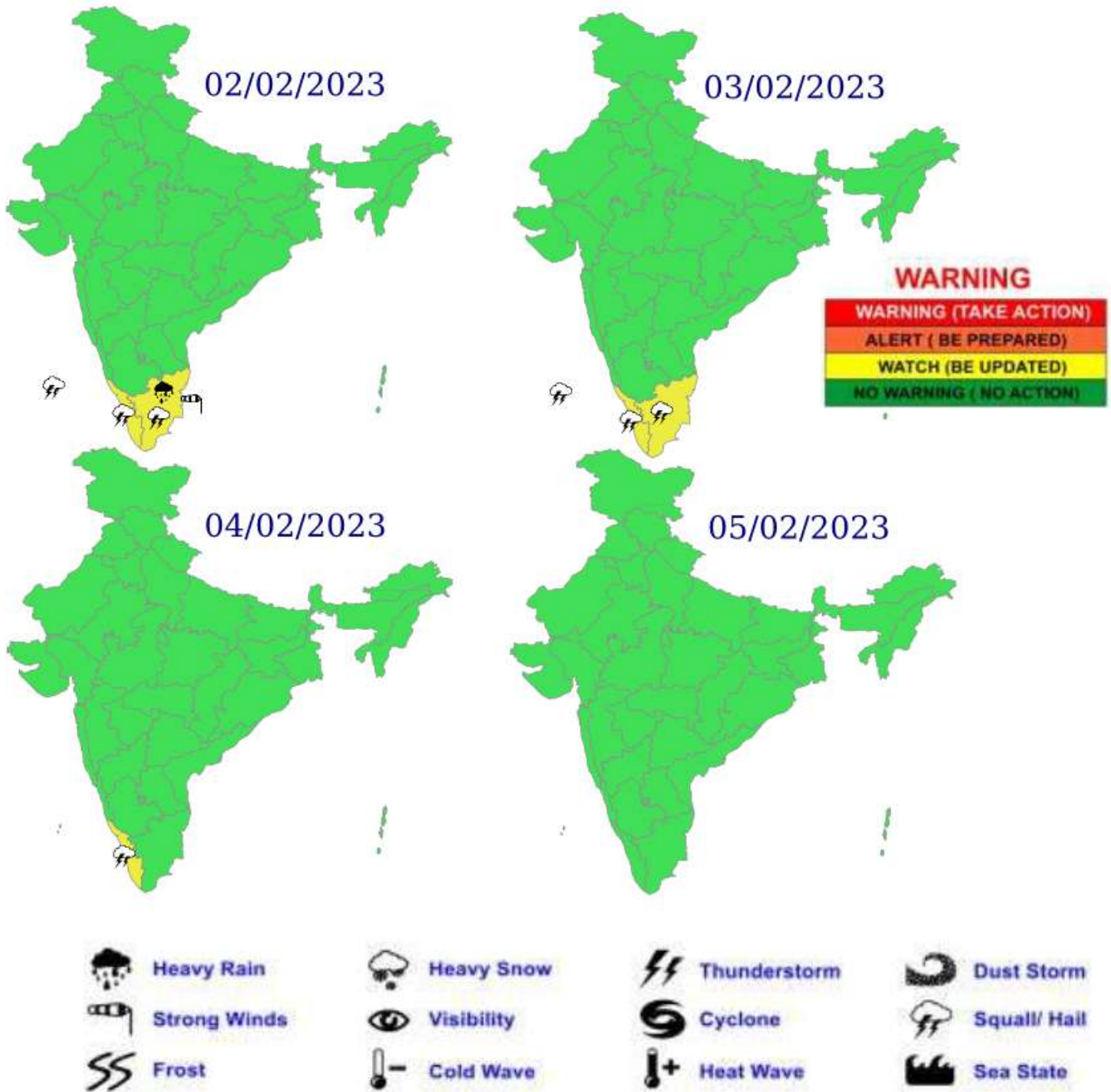
OBSERVED AND FORECAST TRACK OF DEPRESSION OVER SOUTHWEST BAY OF BENGAL OFF SRI LANKA COAST BASED ON 1800 UTC OF 01st FEBRUARY, 2023.



DATE/TIME IN UTC
 IST=UTC + 0530
 L: LOW PRESSURE AREA
 WML: WELL MARKED LOW PRESSURE AREA
 D: DEPRESSION (17-27 KT)
 DD: DEEP DEPRESSION (28-33 KT)
 CS: CYCLONIC STORM (34-47 KT)
 SCS: SEVERE CYCLONIC STORM (48-63KT)
 VSCS: VERY SEVERE CYCLONIC STORM (64-89 KT)
 ESCS: EXTREMELY SEVERE CYCLONIC STORM (90-119 KT)
 SuCS: SUPER CYCLONIC STORM (\geq 120 KT)

-  LESS THAN 34 KT
-  34-47 KT
-  \geq 48 KT
-  OBSERVED TRACK
-  FORECAST TRACK
-  CONE OF UNCERTAINTY

Multi hazard Warning Graphics



Fishermen warning graphics



Squally WX with wind speed 40-45 kmph gusting to 55 kmph

Squally wind speed 45-55 kmph gusting to 65 kmph

Fishermen are advised not to venture into the marked areas.